

# FOR A GOOD REASON **GRUNDIG**

## Notes for Software Release 15 February 2016

### Introduction:

This Software release is valid for the following Camera Models:

Box Cameras	GCI-K1603B, GCI-K1607B, GCI-K1503B, GCI-F0505B, GCI-G0509B
Auto Focus Zoom Box Camera	GCI-K1555Z
Fix Dome Camera	GCI-H2812W, GCI-K2812W, GCI-F2812W, GCI-H0812W, GCI-K1812W, GCI-K0622D, GCI-F0676D, GCI-K1523D, GCI-K1526D, GCI-K1523V, GCI-K1526V, GCI-K1526VH, GCI-K1585V, GCI-K1586V, GCI-K1585V-1. GCI-F1576VH
Fisheye Camera	GCI-G1536F
Integrated Camera	GCI-K1526T, GCI-K1526TH, GCI-K0589T, GCI-K0589T-1, GCI-F0576TH
PTZ Camera	GCI-K0779P, GCI-K1779P, GCI-K2795P
IP Encoder	GEC-D2201AR-1

To get a better overview of the Bug fixes, Improvements and News in the firmware of the last year we add the complete information's from all Software updates in the last year.

First "Bug fix", second "Improvements", third "News"

## Bug fix

### Software Version gr20160215NSA

1. The Active X “Grundig Viewer” for the Internet Explorer is updated. Old digital signature is SHA-1 and cannot be installed on Windows7/8/10 directly from the camera (device). New digital signature is SHA-256. “Grundig Viewer” version 1.18.22

### Software Version gr20150605NSA

1. Fix the bug that the Interval of detecting IP is different than the setting.
2. Prevents random video lose in combination with GRI NVR.

### Software Version gr20150318NSA

1. Fix the bug that when the shutter speed of GCI-HxxxxW, GCI-K1603B Model is 1/25 and „only MJPEG 1080p 13fps“ is selected, frame rate shows 25fps.

### Software Version gr20150310NSA

1. Fix the issue that when video resolution is MJPEG only, camera keeps rebooting.

### Software Version gr20141223NSA

1. Fix bug that under system/manage users, when edit user name or user password, it could be successfully save without any error.

### Software Version gr20141119NSA

1. Fix the bug that when testing ONVIF, if switch static IP to DHCP, the ONVIF server will not work, then the ONVIF test will fail.

### Software Version gr20141027NSA

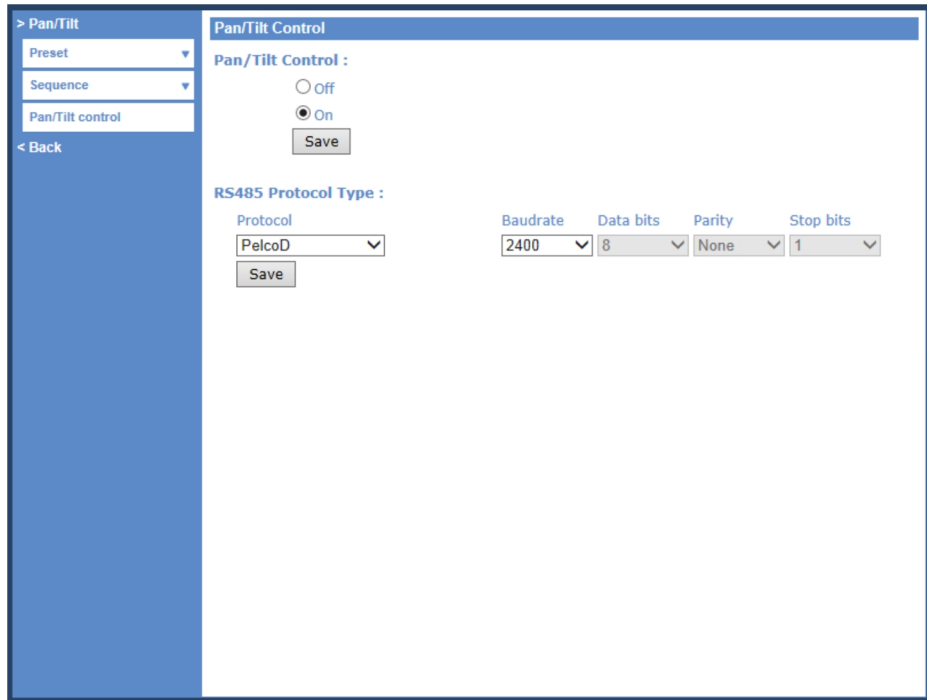
1. Fix bug of the time stamp function, in order to solve the serious jitterd streaming problem in all PTZ Series.
2. Fix bug of disappeared V-SYNC and the missing frames under slow shutter mode in 2Megapixel PTZ module.

### Software Version gr20141008NSA

1. Fix bug to improve/adjust iris testing process within production.

### Software Version gr20140905NSA

1. Revise the RS485 protocol, the default setting has changed to Pelco D2400.



#### **Software Version gr20140731NSA**

1. Fix the bug the frame rate will be show incorrect in SD PTZ models.

#### **Software Version gr20140603NSA**

1. Add camera Firmware, ONVIF Version, Camera working time under System/Software Version
2. No screen pointer for non RS485(pan/tilt) camera

#### **Software Version gr20140317NSA**

1. Schedule function correction: day, night modes did not function correctly  
Event functions can now work with not only indicated time schedule but also day, night mode. E.g
  - a. Set up schedule

GRUNDIG GCI-K1586V

>System  
System  
Security  
Network  
DDNS  
Mail  
FTP  
HTTP  
Events  
Storage management  
Recording  
**Schedule**  
File Location  
View Information  
Factory Default  
Software Version  
Software Upgrade  
Maintenance  
< Back

**Schedule**

	Weekday	Start time	Duration
1	0 - 0 - 0 - 0 - 0	night	----
2	0 - 0 - 0 - 0 - 0	day	----
3	----	----	----
4	----	----	----
5	----	----	----
6	----	----	----
7	----	----	----
8	----	----	----
9	----	----	----
10	----	----	----

☐ Sun ☐ Mon ☐ Tue ☐ Wed ☐ Thu ☐ Fri ☐ Sat  
☐ Day  
☒ Night  
☒ Time Start time : 00:00 Duration : 24:00

b. Set up event with indicated schedule

GRUNDIG GCI-K1586V

>System  
System  
Security  
Network  
DDNS  
Mail  
FTP  
HTTP  
Events  
Application  
Motion detection  
Network failure detection  
Tampering  
Time lapse  
Manual trigger  
Storage management  
Recording  
**Schedule**  
File Location  
View Information  
Factory Default  
Software Version  
Software Upgrade  
Maintenance  
< Back

**Motion Detection**

Motion Detection 1

☐ Off ☐ On  
☒ By schedule 1

**Motion Detection Setting**

Sampling pixel interval [1-10]   
 Detection level [1-100]   
 Sensitivity level [1-100]   
 Time interval(sec) [0-7200]

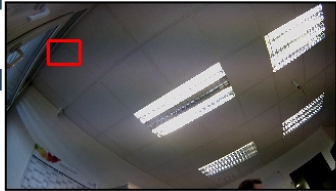
**Triggered Action**

☐ Enable alarm output   
☐ Record video clip  
☐ Send alarm message by FTP ☐ Send alarm message by E-mail  
☐ Upload image by FTP ☐ Upload image by E-Mail  
☐ Send HTTP notification

**File Name :**

☒ Add date/time suffix  
☐ Add sequence number suffix (no maximum value)  
☐ Add sequence number suffix up to  and then start over  
☐ Overwrite

**Motion Detection Windows**



**GRUNDIG** GCI-K1586V

>System  
System  
Security  
Network  
DDNS  
Mail  
FTP  
HTTP  
Events  
Application  
Motion detection  
Network failure detection  
Tampering  
Time lapse  
Manual trigger  
Storage management  
Recording  
Schedule  
File Location  
View Information  
Factory Default  
Software Version  
Software Upgrade  
Maintenance  
< Back

**Motion Detection**  
Motion Detection 2  
☐ Off ☐ On  
☒ By schedule 2

**Motion Detection Setting**  
Sampling pixel interval [1-10] 1  
Detection level [1-100] 10  
Sensitivity level [1-100] 80  
Time interval(sec) [0-7200] 10

**Triggered Action**  
☐ Enable alarm output high  
☐ Record video clip  
☐ Send alarm message by FTP  
☐ Upload image by FTP  
☐ Send HTTP notification  
☐ Send alarm message by E-mail  
☐ Upload image by E-Mail

**File Name :** image.jpg  
☒ Add date/time suffix  
☐ Add sequence number suffix (no maximum value)  
☐ Add sequence number suffix up to 0 and then start over  
☐ Overwrite  
save

**Motion Detection Windows** add delete

Motion detection 1 will be loaded during nighttime and when it comes to day time, motion detection 2 will be loaded.

2. Camera profile correction: was not able to loaded camera profile successfully.  
Camera profile is to save a group of settings from “Camera” page, such as Exposure, White Balance, Picture Adjustment, Backlight, Digital Zoom, IR function, WDR function, Noise Reduction, for efficient use. It can also work with schedule to indicate the suitable camera profile for specific time and condition .E.g.

a. Set up a schedule

**GRUNDIG** GCI-K1586V

>System  
System  
Security  
Network  
DDNS  
Mail  
FTP  
HTTP  
Events  
Storage management  
Recording  
Schedule  
File Location  
View Information  
Factory Default  
Software Version  
Software Upgrade  
Maintenance  
< Back

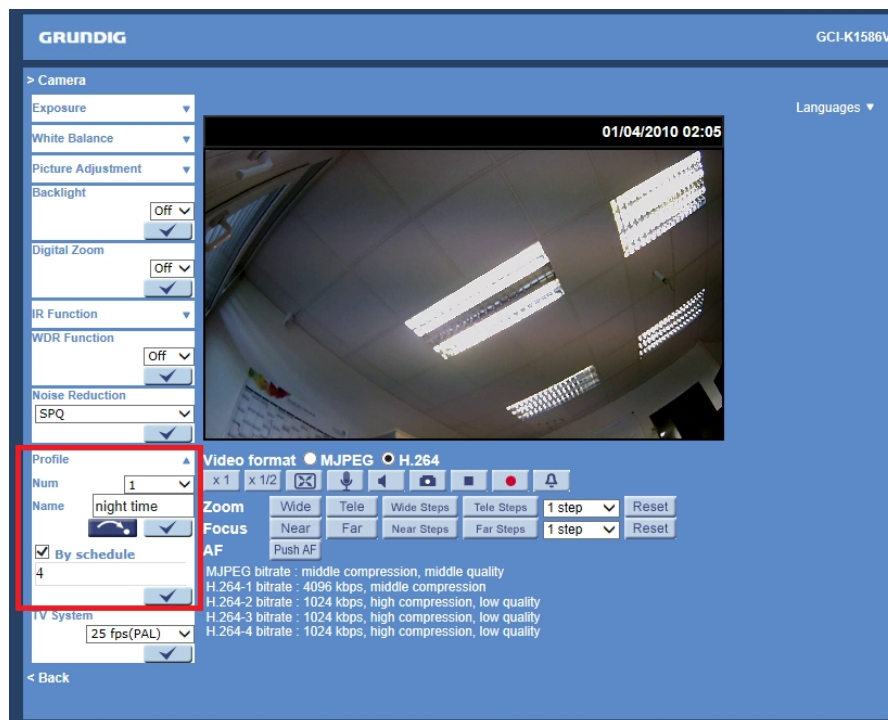
**Schedule**

	Weekday	Start time	Duration
1	0 - 0 - 0 - 0 - 0	night	----
2	0 - 0 - 0 - 0 - 0	day	----
3	0 0 0 0 0 0	06:00	18:00
4	0 0 0 0 0 0	18:00	24:00
5	- - - - -	----	----
6	- - - - -	----	----
7	- - - - -	----	----
8	- - - - -	----	----
9	- - - - -	----	----
10	- - - - -	----	----

☒ Sun ☒ Mon ☒ Tue ☒ Wed ☒ Thu ☒ Fri ☒ Sat  
☐ Day  
☐ Night  
☒ Time Start time : 18:00 Duration : 24:00  
Save Delete

b. Summer, day time settings indicated to profile 1 and loaded according to

the time schedule in schedule 4.



A Profile could be selected with multiple schedules.



3. Audio function fixed for GCI-H0812W and GRI series.
4. Streaming bug fixed for GCI-H0812W & GCI-K1812W and GRI series

## Improvements

### Software Version gr20150731NSA

1. Host name of the cameras are updated to the new ONVIF rule.

<b>GCI-H0812W</b>	<b>GCI- K1812W</b>	<b>GCI-H2812W</b>	<b>GCI-K2812W</b>	<b>GCI-F2812W</b>
Fix-Dome-Camera	Fix-Dome-Camera	Fix-Dome-Camera	Fix-Dome-Camera	Fix-Dome-Camera

<b>GCI-K1523D</b>	<b>GCI-K1526D</b>	<b>GCI-K0622D</b>	<b>GCI-F0676D</b>	<b>GCI-K1585V</b>
Fix-Dome-Camera	Fix-Dome-Camera	Fix-Dome-Camera	Fix-Dome-Camera	Fix-Dome-Camera

<b>GCI-K1585V-1</b>	<b>GCI-K1586V</b>	<b>GCI-K1526V</b>	<b>GCI-K1526VH</b>	<b>GCI-F1576V</b>
Fix-Dome-Camera	Fix-Dome-Camera	Fix-Dome-Camera	Fix-Dome-Camera	Fix-Dome-Camera

<b>GCI-K1576VH</b>	<b>GCI-K0589T</b>	<b>GCI-K0589T-1</b>	<b>GCI-K1526T</b>	<b>GCI-K1526TH</b>
Fix-Dome-Camera	Bullet-Camera	Bullet-Camera	Bullet-Camera	Bullet-Camera

<b>GCI-F0576TH</b>	<b>GCI-K0779P</b>	<b>GCI-K1779P</b>	<b>GCI-K2795P</b>	<b>GCI-C0745P-1</b>
Bullet-Camera	PTZ-Dome-Camera	PTZ-Dome-Camera	PTZ-Dome-Camera	PTZ-Dome-Camera

<b>GCI-G1536F</b>	<b>GCI-K1503B</b>	<b>GCI-K1603B</b>	<b>GCI-K1607B</b>	<b>GCI-F0505B</b>
Fisheye-Camera	Box-Camera	Box-Camera	Box-Camera	Box-Camera

<b>GCI-G0509B</b>	<b>GCI-K1555Z</b>	<b>GEC-D2201AR-1</b>		
Box-Camera	Box-Camera	Video-Encoder		

### Software Version gr20141223NSA

1. Revise multi-languages translation in OSD
2. Update viewer to latest version of 1.18.13  
Note: we strongly recommend that remove the old version and reload the version 1.18.13 from the camera.
3. Remove “BNC support” wording under video format in the web GUI and the function still works
4. Under Streaming/Frame rate, add the note:“ These settings vary depending on the selected TV system!”

**GRUNDIG** GCI-K2795P

> Streaming

Video Format

Video Compression

Video Text Overlay

Video OCX Protocol

Video Frame Rate

< Back

**Video Frame Rate**

**MJPEG Frame Rate Setting:**

MJPEG frame rate : 60

Save

**H264-1 Frame Rate Setting:**

H264-1 frame rate : 25

Save

**H264-2 Frame Rate Setting:**

H264-2 frame rate : 25

Save

**H264-3 Frame Rate Setting:**

H264-3 frame rate : 60

Save

**H264-4 Frame Rate Setting:**

H264-4 frame rate : 60

Save

**Note:**  
These settings vary depending on the selected TV system!

## Software Version gr20140731NSA

1. Set P-Iris default value to be F16, max. value to be F19 in Full HD IP PTZs Models
2. Support using date to search the file in SD card and NAS

**GRUNDIG** GCI-K1779P

> System

System

Security

Network

DDNS

Mail

FTP

HTTP

Events

Autotracking

Storage management

SD Card

Network Share

Recording

Schedule

File Location

View Information

Factory Default

Software Version

Software Upgrade

Maintenance

< Back

**Storage Management**

**Device information**

Device type: SD card - n/a

Free space: 0KB

Status: No

Total size: 0KB

Full: No

**File Format**

File Format : AVI

Save

**Device setting**

Format device : Format

**Disk cleanup setting**

☐ Enable automatic disk cleanup

Remove recordings older than: 1 day(s)

Remove oldest recordings when disk is: 85 % full

Save

**Recording list**

From 2010-04-03 to 2010-04-03

Date (yyyy-mm-dd) Date (yyyy-mm-dd)

Search

☒ VIDEO ☐ JPEG

FileName Size

Remove Sort download



3. Motion detection function improved
  - a. Reduce false alarm (previous issue: easily been triggered at night, hardly trigger when mask is big but object with motion is small)
  - b. Suggest of sampling interval is 1 (default value)

#### **Software Version gr20140605NSA**

1. This Firmware support GEC-D2201AR-1
2. Grundig Viewer is updated (ver.1.18.19). Please remove the current Grundig Viewer from your PC and install the new version from the updated camera.
3. Time out of DHCP search at camera default start, is changed to 2,5 minutes from 4 Minutes.
4. Default resolution is changed. Resolution of the H.264-1 will be the maximum resolution the model can support.

#### **Software Version gr20140603NSA**

1. Update Genetec Protocol
2. Update OPENSLL for heartbleed security bug
3. Add Note under the OSD Point System/Mai and System/FTP: "Image attachment by FTP or E-Mail will be available only while MJPEG streaming is selected"
4. Network Failure Detection is set in default mode to "off"
5. Update Turkish translation

#### **Software Version gr20140317NSA**

1. NAS reording function correction: to support \*.LCK recording to NAS.

#### **Software Version gr20140310NSA**

1. Add Note under System/Events/Time Lapse Page: "These works only if you set at the video format of the camera a MJPEG Stream"
2. Grundig Viewer is updated (ver.1.18.18), we recommend uninstalling the old version from your PC and installing the new version from the camera.
3. Date Format in recording list changes to dd-mm-yyyy

GRUNDIG

Not Defined

>System

System

Security

Network

DDNS

Mail

FTP

HTTP

Events

Storage Management

Micro SD Card

Network Share

Recording

Schedule

File Location

View Information

Factory Default

Software Version

Software Upgrade

Maintenance

< Back

Storage Management

Device Information

Device type: SD card - vfat

Free space: 61847184KB

Total size: 61852144KB

Status: Yes

Full: No

File Format

File Format : AVI

Save

Device Setting

Format device : Format

Disk cleanup setting

☐ Enable automatic disk cleanup

Remove recordings older than: 1 day(s)

Remove oldest recordings when disk is: 85 % full

Save

Recording List

From 04-04-2010 to 04-04-2010

Date (dd-mm-yyyy) Date (dd-mm-yyyy)

Search

☒ VIDEO ☐ JPEG

FileName

Size

R\_040410\_002412\_002415.avi 1850KB

R\_040410\_002417\_002420.avi 1851KB

Remove

Sort

Download

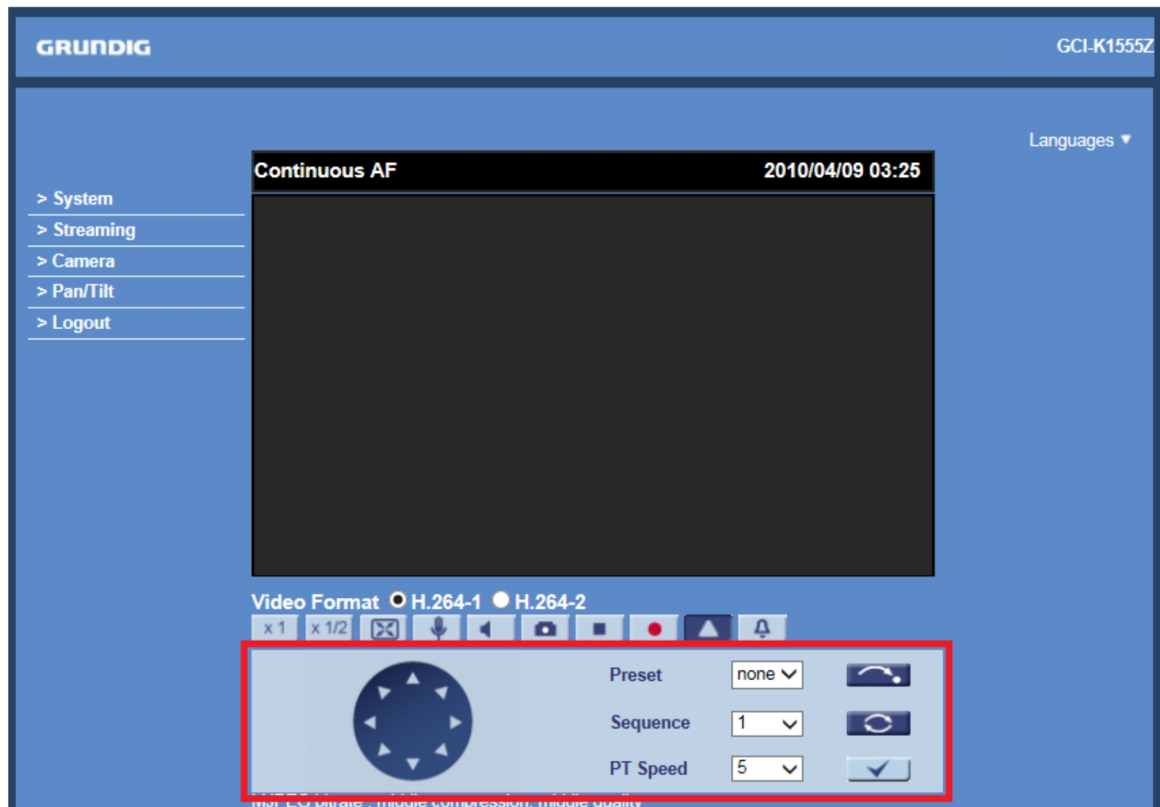
## New Features

### Software Version gr20151204NSA

1. Add the Model GCI-K0626D

### Software Version gr20151008NSA

1. Add Control Panel for GCI-K1555Z



### Software Version gr20150731NSA

2. Add push AF function to Onvif AuxiliaryData>Command1
3. Add P-Iris function to ONVIF AuxiliaryData>Command2.
4. Add Home Position for GCI-K1555Z

The screenshot shows the Grundig PTZ control interface. On the left, a sidebar menu lists 'Preset', 'Sequence', 'Home' (highlighted with a red box), 'Pan/Tilt Control', and '< Back'. The main panel is titled 'Home setting' and contains the following configuration options:

- Switch:** A dropdown menu set to 'Off' with a 'Set' button below it.
- Time:** A numeric input field set to '1' with a range indicator '[1..128Min]'.
- Type:** A dropdown menu set to 'Preset' with a 'Set' button below it.
- Line:** A dropdown menu set to 'NONE' with a 'Set' button below it.

5. On GCI-K1555Z the priority of controlling camera manually is higher than trigger PTZ function

#### Software Version gr20150410NSA

1. Add PTZ function in application page for GCI-K1555Z. When camera is triggered, camera and Ulisse unit would go to a predefined preset point. The predefined preset point should be saved in preset point 250.

**GRUNDIG** GCI-K1555Z

> System  
System  
Security  
Network  
DDNS  
Mail  
FTP  
HTTP  
Events  
Application  
Motion Detection  
Network Failure Detection  
Tampering  
Time Lapse  
Manual Trigger  
Audio detection  
Storage Management  
Recording  
Schedule  
File Location  
View Information  
Factory Default  
Software Version  
Software Upgrade  
Maintenance  
< Back

**Application**  
**Alarm Switch**  
☒ Off ☐ On ☐ By schedule

**Alarm Type**  
☐ Normal close ☒ Normal open

**Alarm Output**  
☒ Output high ☐ Output low

**Triggered Action**  
☒ Enable alarm output ☐ IR cut filter   
☐ Send message by FTP ☐ Send message by E-Mail  
☐ Upload image by FTP ☐ Upload image by E-Mail  
☐ Send HTTP notification ☐ Record video clip  
☒ PTZ Function  
Preset   
Dwell time:

**File Name**  
File name :   
☒ Add date/time suffix  
☐ Add sequence number suffix (no maximum value)  
☐ Add sequence number suffix up to  and then start over  
☐ Overwrite

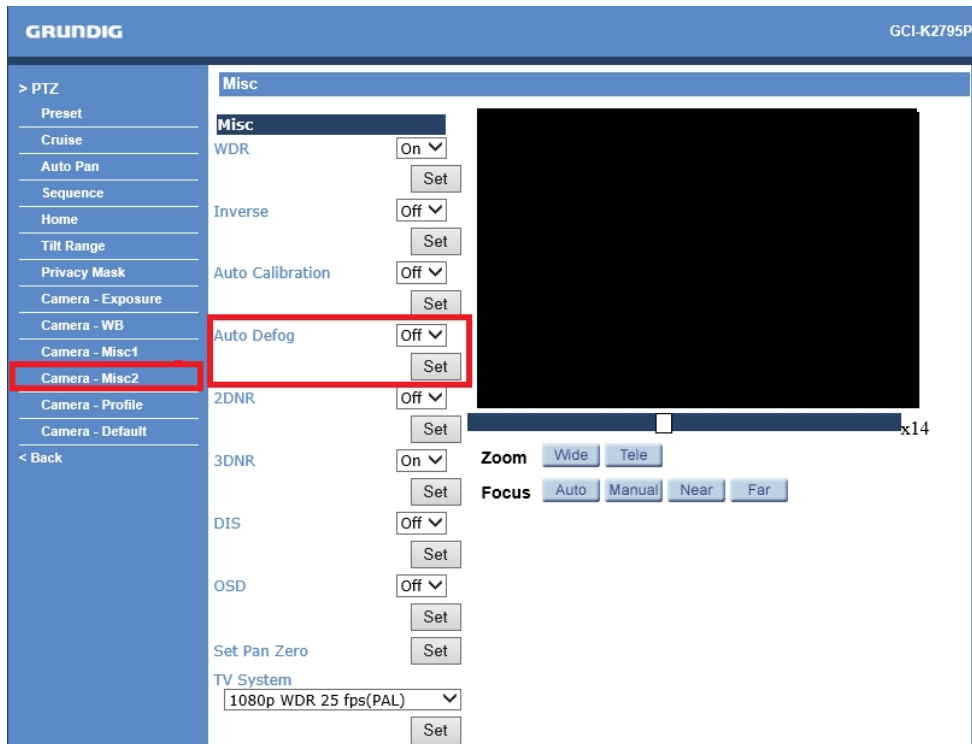
2. Time Lapse recording can be saved to NAS.

### Software Version gr20141223NSA

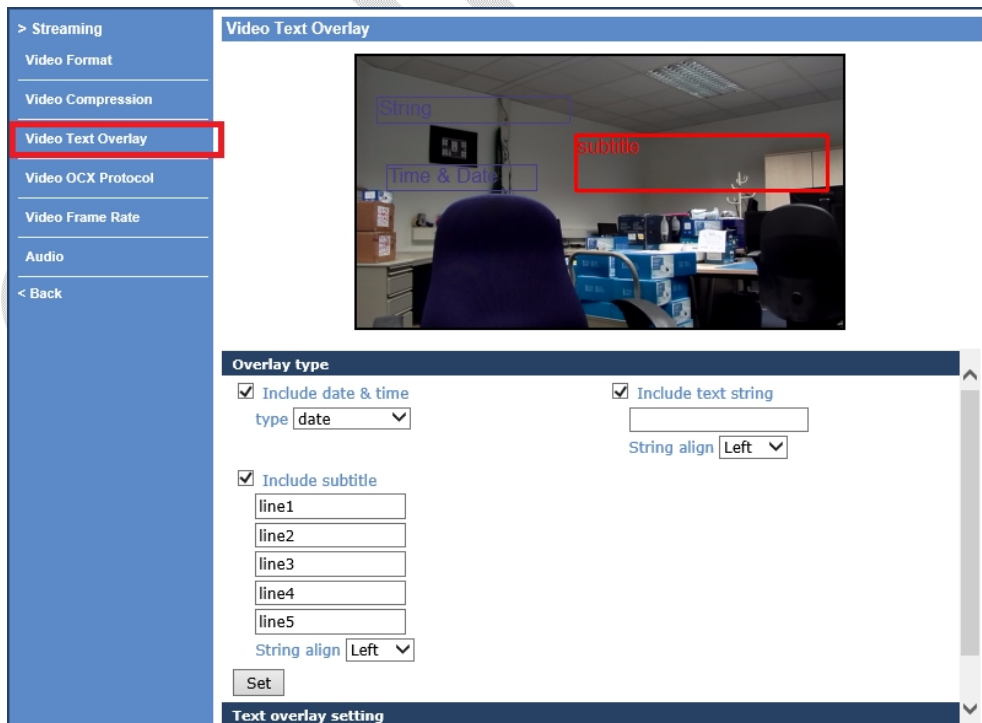
1. Add Day&Night Threshold function. Refer the file “Day\_Night Threshold”!
2. Support Day/Night Threshold under Camera Profile function.

### Software Version gr20140731NSA

1. Add Auto Defog function to GCI-K2795P Model



2. Add options for size and color of Text Overlay. User can drag and drop the position of Text Overlay. For this function please install the newest Grundig Viewer from the camera.



3. Add Audio Detection at events. Audio Detection function allows the camera to detect audio and trigger alarms when audio volume in the detected area reaches /

exceeds the determined sensitivity threshold value.

>System  
System  
Security  
Network  
DDNS  
Mail  
FTP  
HTTP  
Events  
Application  
Motion Detection  
Network Failure Detection  
Tampering  
Time Lapse  
Manual Trigger  
**Audio detection**  
Storage Management  
Recording  
Schedule

**Audio Detection**

**Audio Detection**

☒ Off ☐ On

**Audio Detection Setting**

Detection Level [1-100]

Time interval(sec) [0-7200]

**Triggered Action**

☐ Enable alarm output  ☐ Record video clip

☐ Send message by FTP ☐ Send message by E-Mail

☐ Upload image by FTP ☐ Upload image by E-Mail

☐ Send HTTP notification

**File Name**

File name :

☒ Add date/time suffix

☐ Add sequence number suffix (no maximum value)

☐ Add sequence number suffix up to  and then start over

☐ Overwrite

4. Add new Model to Software GCI-C0745P-1

#### Software Version gr20140603NSA

1. Add new Models: GCI-G1536F, GCI-K0622D, GCI-F2812W, GCI-F0676D, GCI-F1576V

#### Software Version gr20140317NSA

1. Add new Models GCI-H2812W, GCI-K2812W

## Instruction to Upgrade the Firmware:

### Software Upgrade

Software upgrade can be carried out on the “Software Upgrade” page, as shown below.

The screenshot displays the Grundig GCI-K1555Z web interface. On the left is a blue sidebar menu with the following items: > System, System, Security (with a dropdown arrow), Network (with a dropdown arrow), DDNS, Mail, FTP, HTTP, Events (with a dropdown arrow), Storage management (with a dropdown arrow), Recording, Schedule, File Location, View Information (with a dropdown arrow), Factory Default, Software Version, Software Upgrade, Maintenance, and < Back. The main content area is titled 'Upgrade' and contains the heading 'Follow These Steps To Do The Software Upgrade'. It outlines three steps: Step1: 'Upload the binary file' with a text input field and a 'Durchsuchen...' button; Step2: 'Select binary file you want to upgrade' with a dropdown menu showing 'GCI-Firmware'; and Step3: 'Click the upgrade button to start the upgrade process' with an 'Upgrade' button.

NOTE: Make sure the upgrade software file is available before carrying out the software upgrade.

The procedure of a software upgrade is as follows:

Step 1: Click on “Browse” and select the following binary file to be uploaded: GCI-Firmware.

NOTE: Do not change the upgrade file name, or the system will fail to find the file.

Step 2: Pull down the upgrade binary file list and select the file you want to upgrade; in this case, select “GCI-Firmware”.

Step 3: Click on “Upgrade”. The system will first check whether the upgrade file exists or not, and then begin to upload the upgrade file. Subsequently, the upgrade status bar will be displayed on the page. When 100% is reached, the upgrade process is finished.

After the upgrade process is finished, the Viewer will return to the Home page.

Step 4: Close the video browser.



Step 5: Go to “Start” on your Windows desktop, activate “Control Panel”, and then double-click on ”Add or Remove Programs“. In the “Currently installed programs” list, select “GRUNDIG Viewer” and click on the button “Remove” to uninstall the existing GRUNDIG Viewer.

Step 6: Open a new web browser, re-login the IP Camera, and then allow the automatic download of the GRUNDIG Viewer.

GRUNDIG